



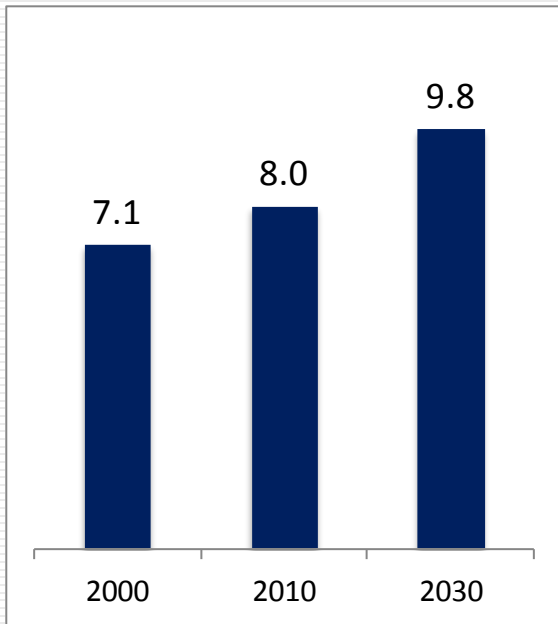
How Tomorrow Moves: *CSX and the Port of Virginia*



Challenge: significant freight growth projected

Virginia Commonwealth Population

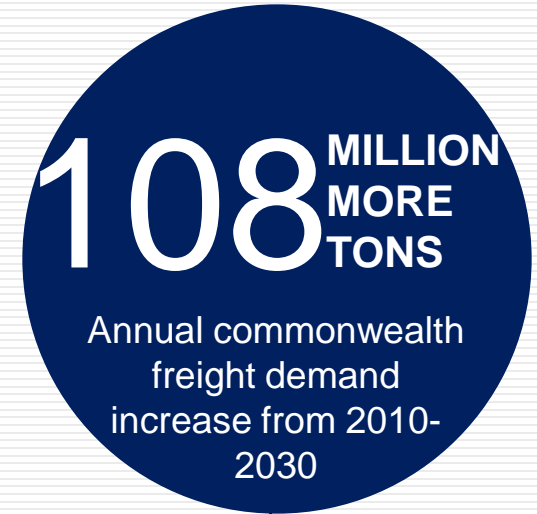
In millions



X



=



Pollution

Road & Rail Congestion

Logistics Cost

Figures according to the Federal Railroad Administration and the US Census Bureau.

Challenge and opportunity: shifts in global trade are driving intermodal flow to the East Coast



Structural changes continue to impact transportation marketplace

Fuel Prices



Higher fuel prices continue to favor rail.

Environmental Mandates



Progressively more stringent environmental mandates

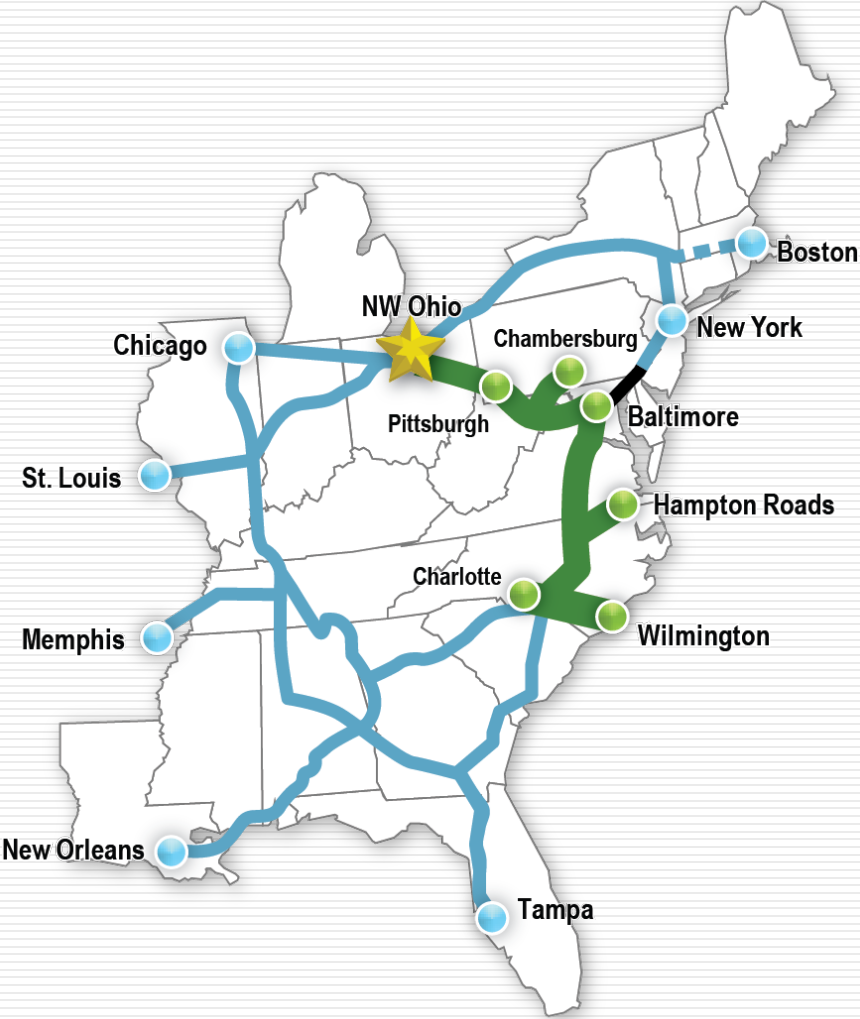
Driver Shortages



Increased regulations in hours of service, safety reporting and background checks

Source: US EIA Weekly Retail On-Highway Diesel Prices

Multi-modal solutions are the answer: National Gateway



National Gateway

- Approximately \$850 million public/private partnership
- CSX-funded terminal capacity
- Public/CSX-funded double-stack capacity from ports to Midwest

National Gateway on track for 2015 completion

- National Gateway is fully funded

- Public and private capital working side by side to drive significant benefits
- CSX committed an additional \$160 million to double-stack and double-track the Virginia Avenue Tunnel



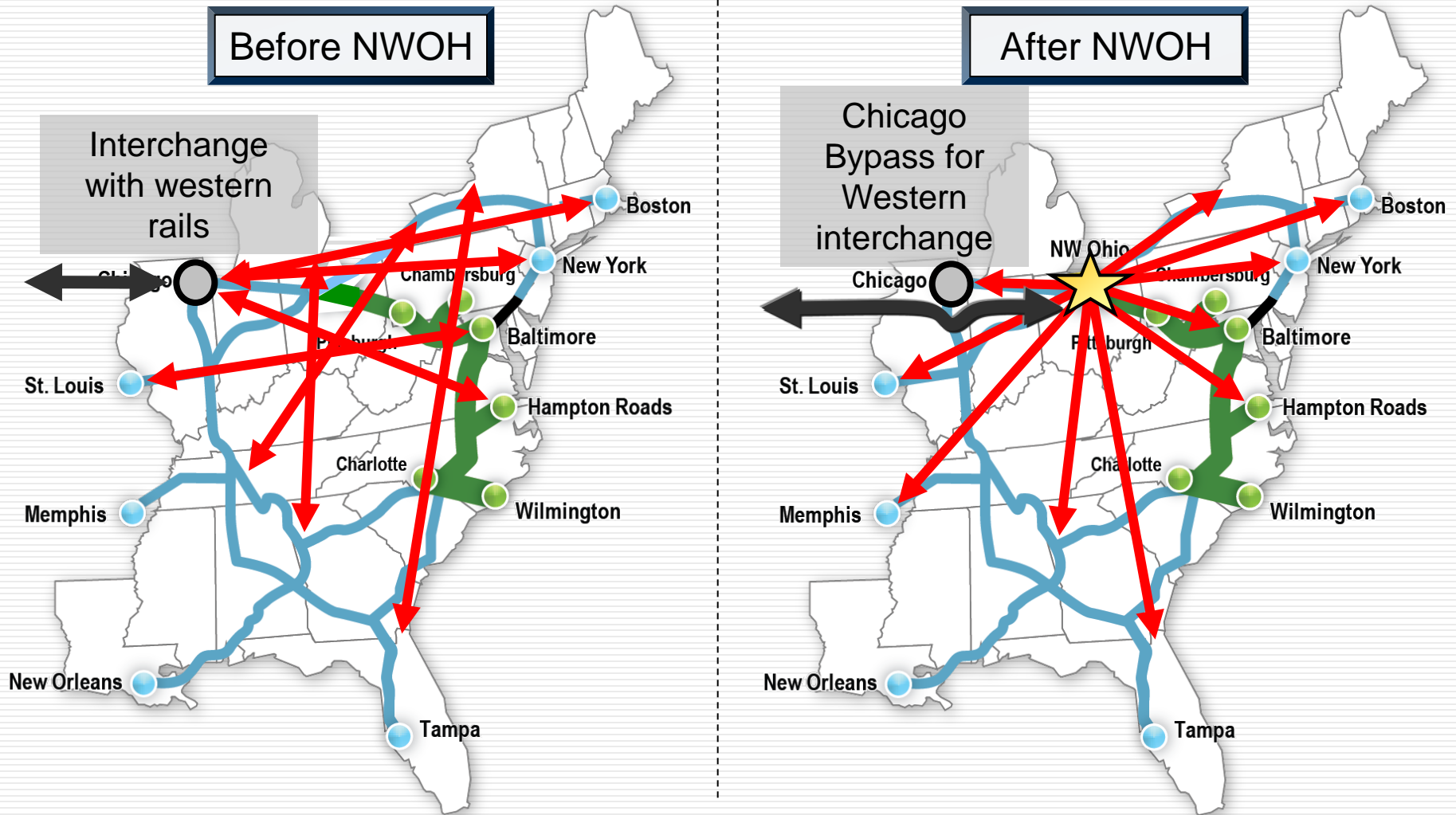
- NW Ohio Intermodal Terminal is up and running



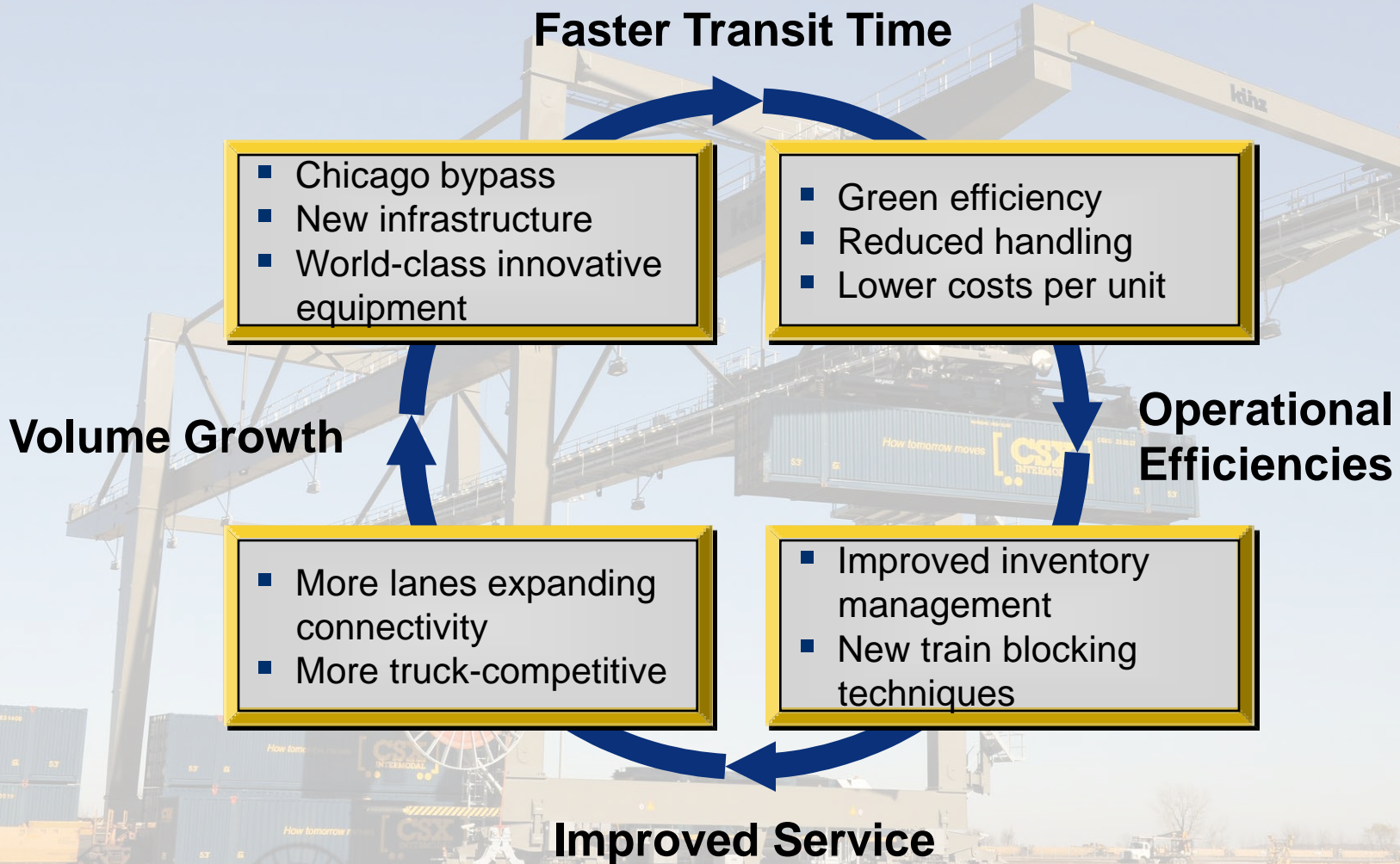
- Clearance projects are either under construction or in permitting in a number of locations

- NEPA process underway for Virginia Avenue Tunnel

NW Ohio terminal creates new hub and spoke network

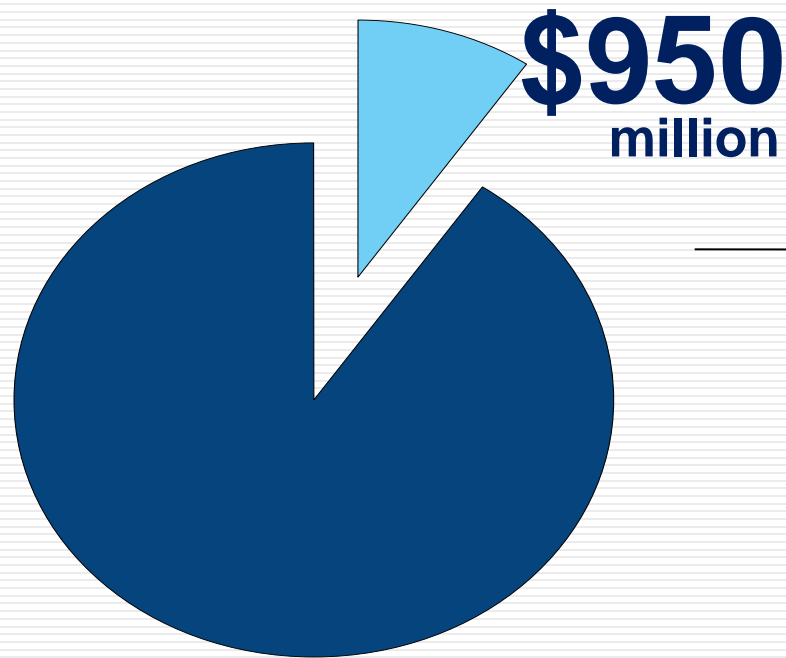


NW Ohio network benefits . . .

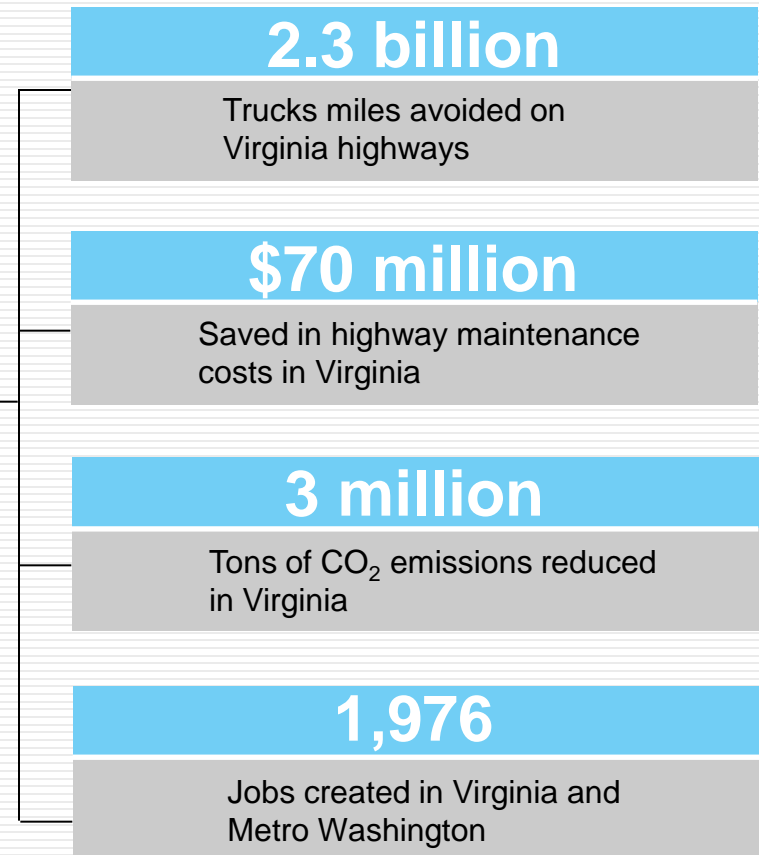


National Gateway drives significant benefits for Virginia

\$10 billion
Total public benefit from National Gateway over the next 30 years



 Total public benefit for the Commonwealth of Virginia



Figures according to 2009 TIGER grant application and tax/wage information.

[CSX]

How tomorrow moves



TM