



# The Importance of Multimodal Transportation to Virginia's Global Competitiveness: A Customer Perspective

**Mr. Jerry Bridges**

*Panel Moderator and  
Executive Director, Virginia Port Authority*

December 8, 2011

# Virginia: A Gateway to the World



Gateway Port  
 The Port of Virginia's Intermodal Connections and Rail Partnerships Help Move Freight Across the Country Efficiently and Cost-Effectively

Heartland Corridor  
 National Gateway  
 Crescent Corridor

Craney Island Marine Terminal  
 54,000 Jobs  
 \$6B in National Benefits  
 Service To U.S. Markets in 48 States  
 Over 14,000 U.S. Businesses Ship Goods Through The Port of Virginia

International Trade Lanes  
 The Port of Virginia's Deep Channels Make it the Only East Coast Port Able to Handle World's Largest Ships

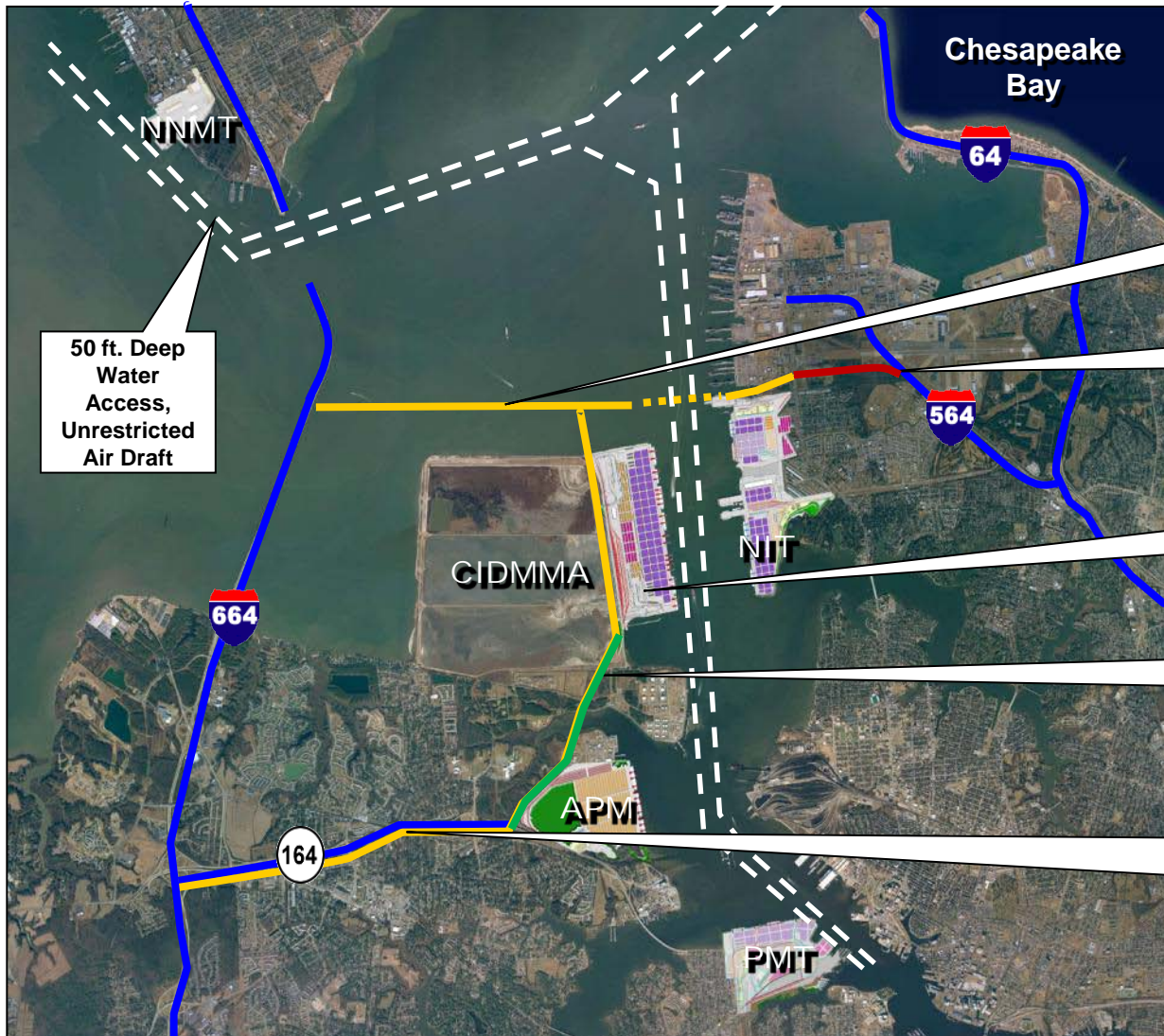


Panama Canal Expansion

# Multi-modal Contributors to Virginia's Economy

- 58,000 miles of roads and highways
- 66 public use airports, including 9 with commercial airline service
- 5 marine ports
- 4 locations intermodal truck/rail terminals
  - \$31.3 billion of goods exported annually through Virginia airports and seaports
  - Virginia-made exports account for \$8.6 billion through our seaports

# Regional Transportation Projects



50 ft. Deep Water Access, Unrestricted Air Draft

Patriot's Crossing

I-564 Connector

Craney Island Marine Terminal

Craney Island Road & Rail Connector

Commonwealth Railway Safety Mainline Relocation

**Investment Over \$4 Billion**

# Heartland Corridor

